

DP200 LCD Dust Shield Install

Remove all welding leads off the front of the machine

Loosen the three control knobs with a small flat blade screwdriver



Remove 10 Phillips head screws
(Three on each side and two on both top and bottom)

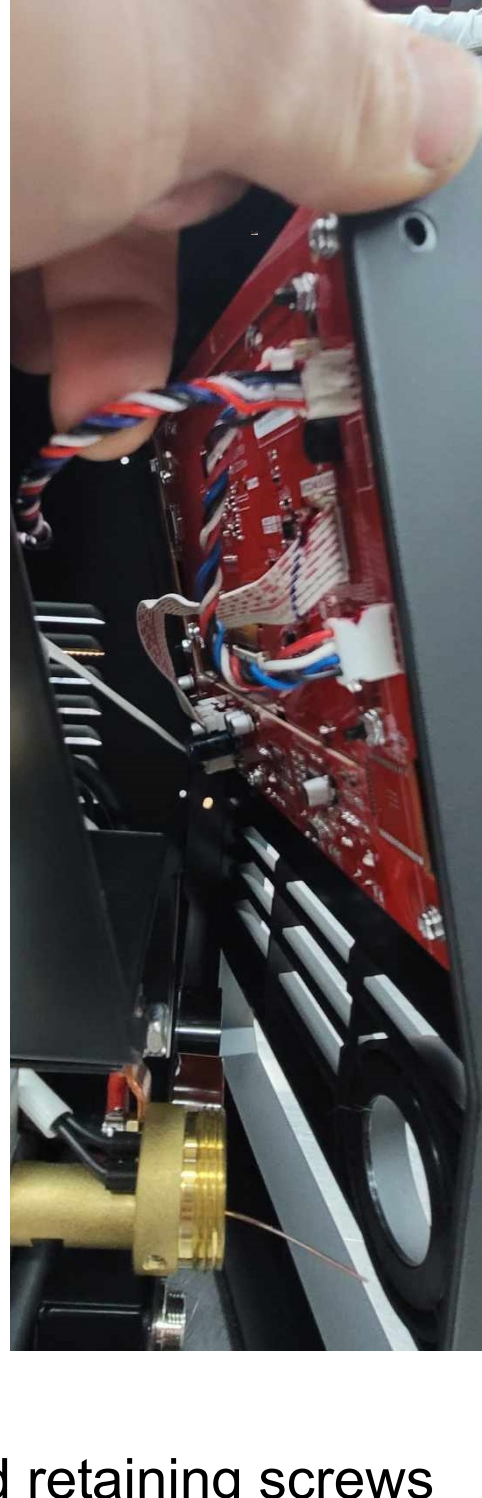


The middle screw on the wire feed cover has a small nut behind it (8mm)

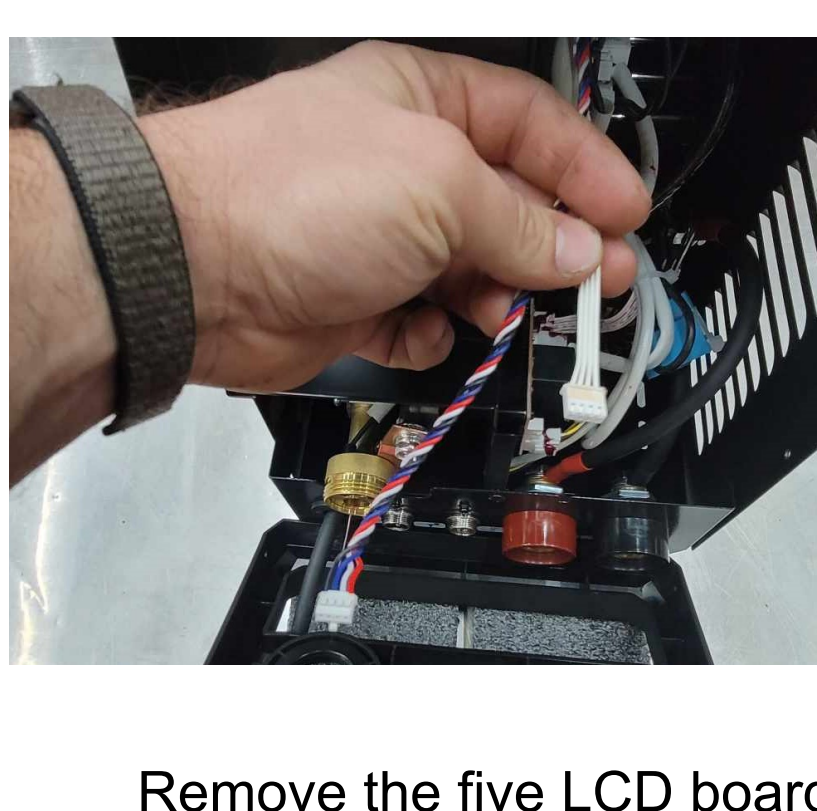


Carefully wiggle the plastic bezel loose. It might be helpful to have the wire feed cover open

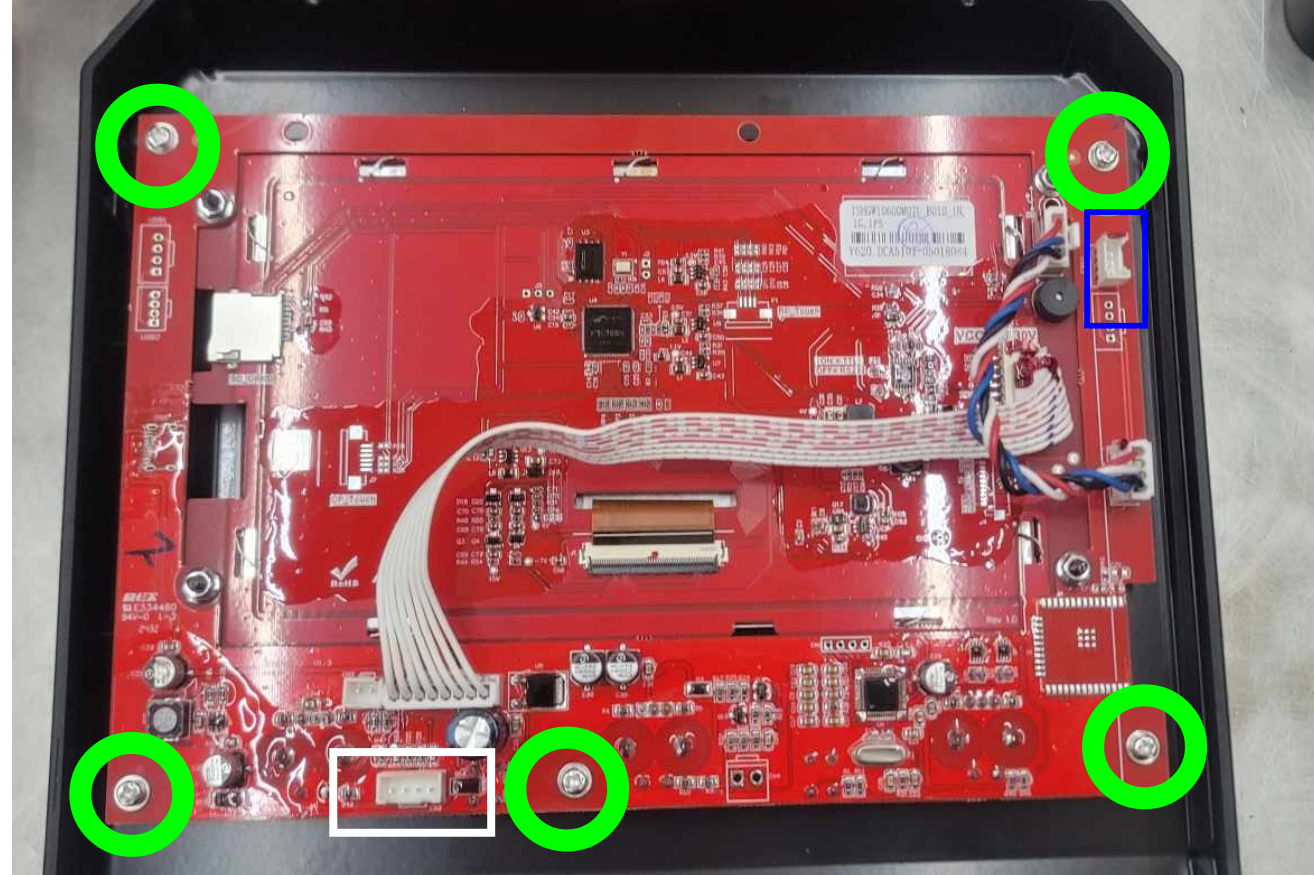
Remove the cover enough to access The two wires connected to the LCD circuit board



Depress the connecting tabs on the two wires running to the LCD board and remove them.



Remove the five LCD board retaining screws



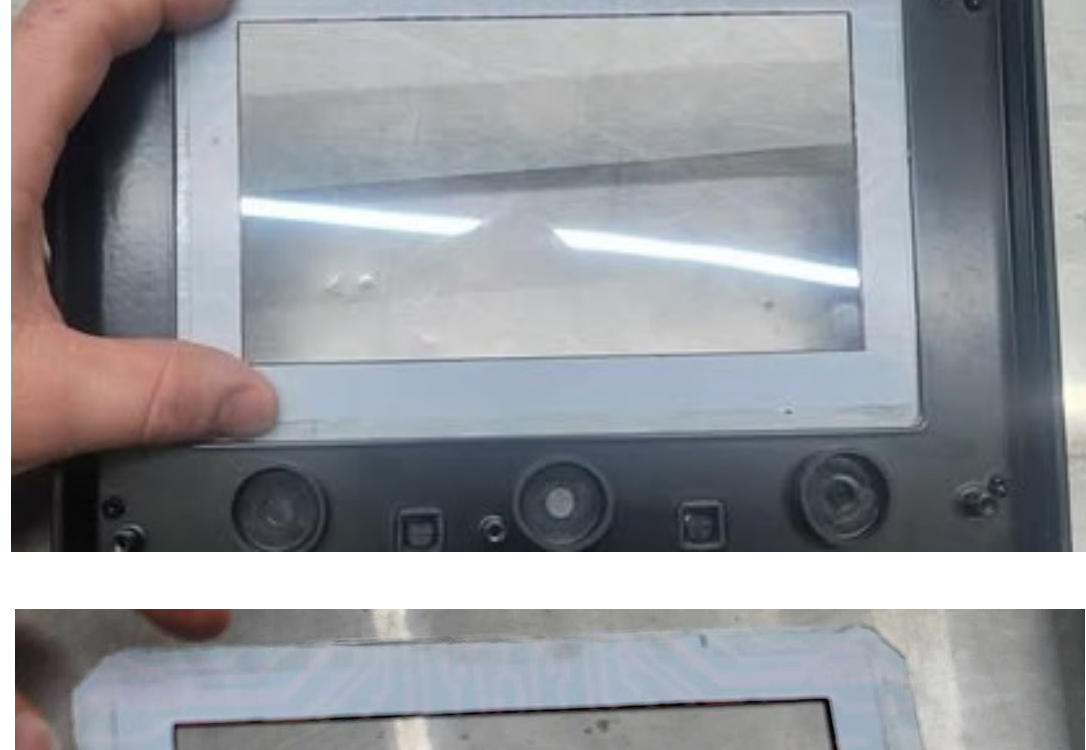
Carefully lift the board off of the plastic bezel.

Optional

But highly recommended

The adhesive holding the front screen cover is very poor & can be another factor of dust. Mine literally fell off after a few weeks.

Carefully press from the inside of the welder bezel outwards & you will be able to slowly remove it.



I wouldn't try to remove the factory adhesive but adding a stronger adhesive around the screen (see picture) seems to cure the issue.



let the adhesive fully dry before assembly

Install the LCD dust shield



The LCD dust shield has offset alignment tabs that only allow it to mount one way.

Carefully set the LCD board back into place and check the alignment of the gasket.

Reverse these steps for reassembly. Be careful not to over tighten the LCD board screws.

Enjoy a dust free screen!

Thanks for trying my product & feel free to message me on Facebook or at my email address dcreations17@gmail.com